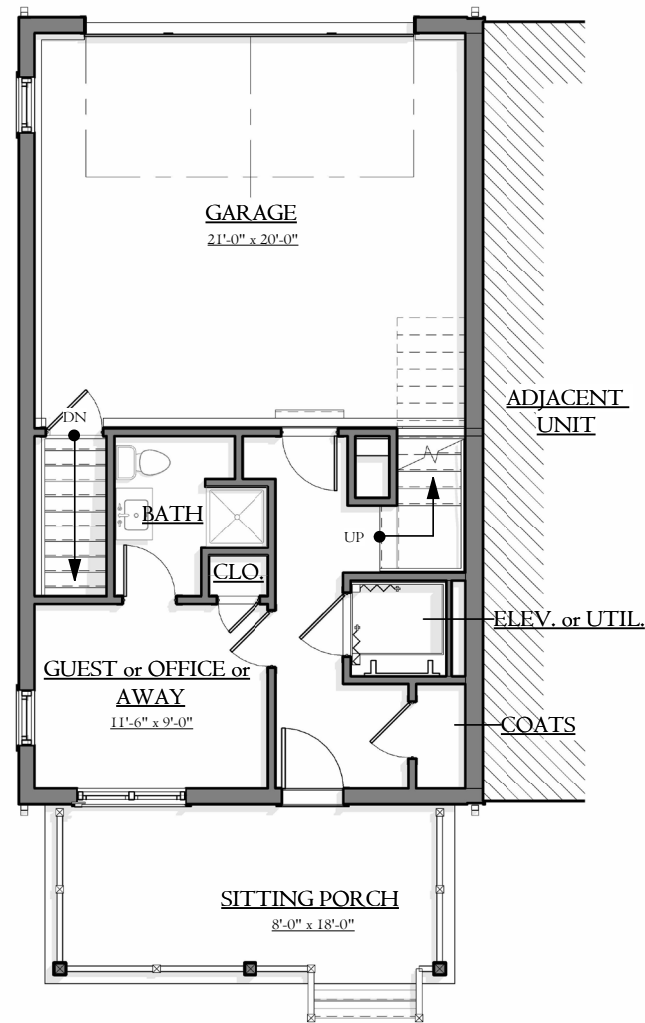
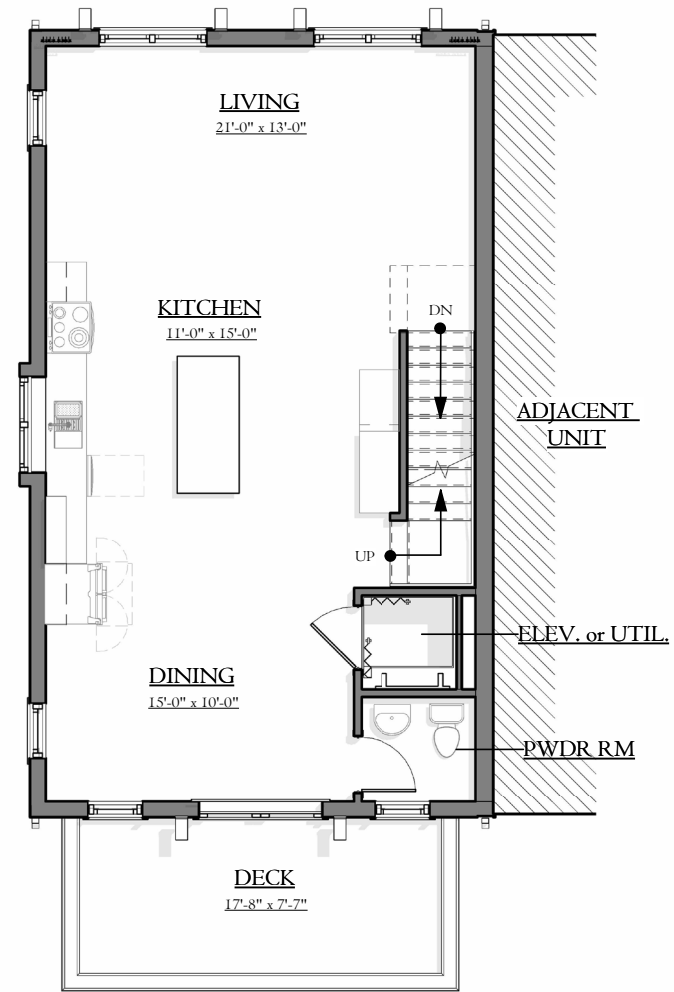


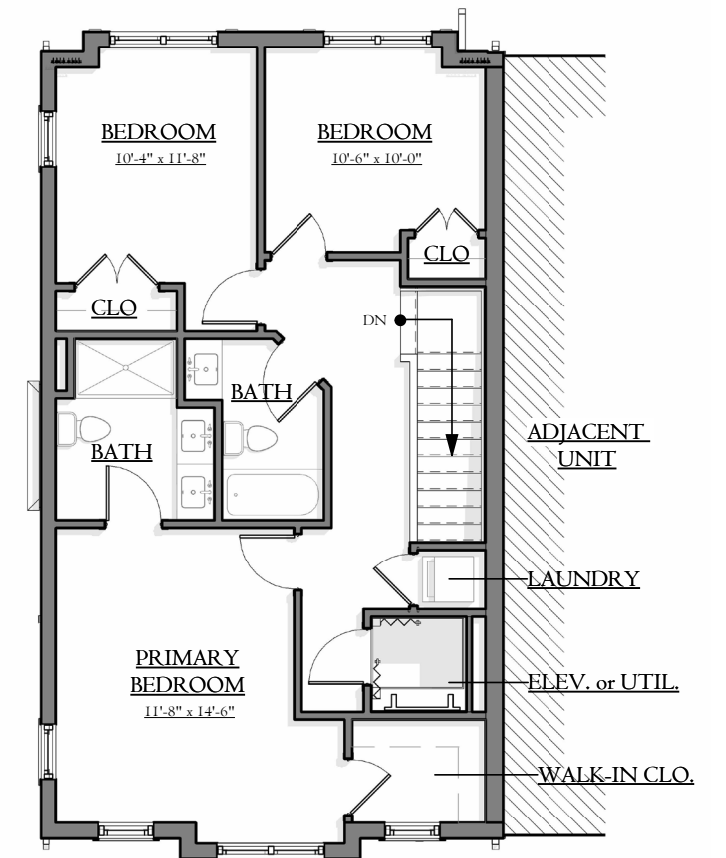
BASEMENT



LOWER



MIDDLE



UPPER

TERRACE HOMES: TYPE B (2,105 sf + 350 sf BASEMENT + 420 sf GARAGE)
VERIDIAN at COUNTY FARM

All plans, virtual renderings, and landscaping shown are for illustrative purposes and may show features that are not included or do not reflect the actual finished product. All sizes, window locations, finishes, square footage, plans, dimensions are approximate and subject to change.